

SINCE 1908
wessels
company

SUBMITTAL

TYPE: In-Line Air Purgers

MODELS: AP-Series
Submittal Sheet No. B-3804

Date: 1-03

JOB

Wessels Representative _____

Unit Tag No. _____

Order No. _____ Date _____

Engineer _____

Submitted By _____ Date _____

Contractor _____

Approved By _____ Date _____

DESCRIPTION

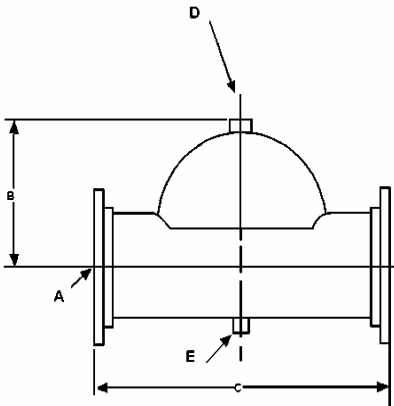
Wessels In-Line Air Purgers are used for commercial and industrial hydronic systems, to effectively control and eliminate entrained air. The purger is rated to 450°F and 150 PSI. The purger is designed with an embossed flow indicator arrow for proper installation. The purgers are fabricated to conform to ASME requirements.

CONSTRUCTION

AP-104 - Cast Iron
ALL OTHERS FABRICATED STEEL

PERFORMANCE LIMITATIONS

Maximum Design Temperature: 450°F
Maximum Design Pressure: 150 PSI



	Dimensions			Tappings		Ship
Model	A	B	C	D	E	Wt (lbs.)
AP-104	4"	5"	10"	3/4" (2)	1/2"	58
AP-105	5"	7-1/2"	20"	1-1/4"	1 1/2	60
AP-106	6"	8-1/2"	24"	1-1/4"	1 1/2	65
AP-108	8"	11-1/4"	32"	1-1/4"	1 1/2	110
AP-110	10"	14"	40"	1-1/4"	1 1/2	165
AP-112	12"	16-3/4"	48"	1-1/4"	1 1/2	315
AP-114	14"	19-3/8"	56"	1-1/4"	1 1/2	475
AP-116	16"	20"	48"	1-1/4"	1 1/2	315
AP-118	18"	23-1/2"	72"	1-1/4"	1 1/2	545
AP-120	20"	28"	84"	1-1/4"	1 1/2	997
AP-124	24"	33-3/4"	96"	1-1/4"	1 1/2	1368

TYPICAL SPECIFICATION

Furnish and install as shown on plans, an in-line type air purger Model AP-_____, equipped with integral flow baffle, as manufactured by Wessels Company. The air purger shall be designed in accordance with the latest revisions of the ASME Code for Boilers and Pressure Vessels, Section VIII, Division 1, and shall be constructed for 150 PSI working pressure @ 450°F. Each air purger shall be Wessels AP-_____ or approved equal.