

SINCE 1908
wessels
company

SUBMITTAL

TYPE: **SEVERE SERVICE STAINLESS**
In-Line Air Purgers

MODELS: APSS-Series

Submittal Sheet No. SS-112

Date: 5-03

JOB _____

Wessels Representative _____

Unit Tag No. _____

Order No. _____ Date _____

Engineer _____

Submitted By _____ Date _____

Contractor _____

Approved By _____ Date _____

DESCRIPTION

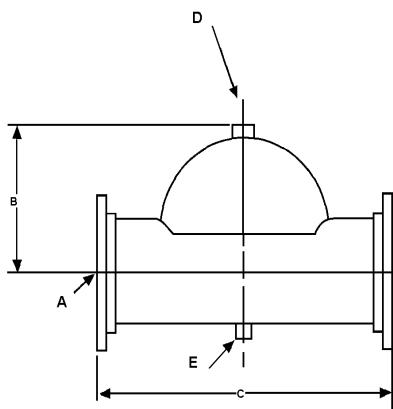
Wessels **Severe Service In-Line Air Purgers** are used for commercial and industrial systems that require internal and external protection more robust than traditional fabricated steel designs. The air purger is designed to effectively control and eliminate entrained air. The purger is rated to 450°F and 150 PSI. The purger is designed with flow indicator arrows for proper installation. The purgers are fabricated to conform to ASME requirements.

CONSTRUCTION

FABRICATED 304 STAINLESS STEEL
* 316L Stainless available

PERFORMANCE LIMITATIONS

Maximum Design Temperature: 450°F
Maximum Design Pressure: 150 PSI



DIMENSIONS AND WEIGHTS

Model	Dimensions			Tappings		Ship Wt (lbs.)
	A	B	C	D	E	
APSS-104	4"	6-3/4"	16"	3/4"	1/2"	55
APSS-105	5"	7-1/2"	20"	1-1/4"	1 1/2	60
APSS-106	6"	8-1/2"	24"	1-1/4"	1 1/2	65
APSS-108	8"	11-1/4"	32"	1-1/4"	1 1/2	110
APSS-110	10"	14"	40"	1-1/4"	1 1/2	165
APSS-112	12"	16-3/4"	48"	1-1/4"	1 1/2	315
APSS-114	14"	19-3/8"	56"	1-1/4"	1 1/2	475
APSS-116	16"	20"	48"	1-1/4"	1 1/2	315
APSS-118	18"	23-1/2"	72"	1-1/4"	1 1/2	545

TYPICAL SPECIFICATION

Furnish and install as shown on plans, a 304-stainless steel in-line type air purger Model APSS-_____, equipped with integral flow baffle, as manufactured by Wessels Company. The air purger shall be designed in accordance with the latest revisions of the ASME Code for Boilers and Pressure Vessels, Section VIII, Division 1, and shall be constructed for 150 PSI working pressure @ 450°F.

Each air purger shall be Wessels APSS-_____ or approved equal.