

SINCE 1908  
**wessels**  
company

SUBMITTAL

TYPE: EPOXY-LINED  
STORAGE TANKS

MODELS: EA-140 TO EA-535

SUBMITTAL SHEET No. EPA-110

Date: 6/03

JOB

Wessels Representative \_\_\_\_\_

Unit Tag No. \_\_\_\_\_

Order No. \_\_\_\_\_ Date \_\_\_\_\_

Engineer \_\_\_\_\_

Submitted By \_\_\_\_\_ Date \_\_\_\_\_

Contractor \_\_\_\_\_

Approved By \_\_\_\_\_ Date \_\_\_\_\_

### DESCRIPTION

Wessels EPA Epoxy-Lined Storage Tanks are epoxy lined carbon steel vessels. They are designed for commercial and industrial systems that require internal protection more robust than traditional fabricated plain steel designs. The tanks are designed to store water for a potable water or water heating system.

### CONSTRUCTION

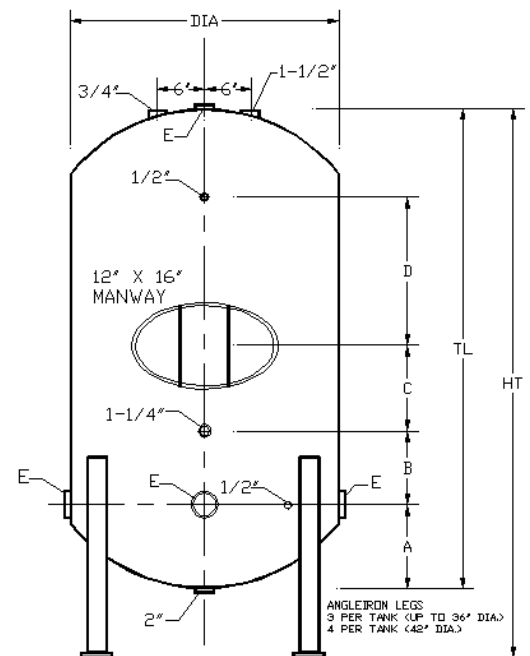
Shell: Carbon Steel  
Interior: NSF Listed Epoxy

### PERFORMANCE LIMITATIONS

Maximum Design Temperature: 180°F  
Maximum Design Pressure: 150 PSIG

### DIMENSIONS AND WEIGHTS

MODEL	GAL.	PRESS.	WT.	DIA	HT	TL	A	B	C	D	E
EA-140	140	150	350	24	81	75	16 7/8	10	16 5/8	28 1/8	2 1/2
EA-190	190	150	460	30	72	66	18 3/4	8	16 1/4	17 3/4	2 1/2
EA-225	225	150	510	30	84	78	18 3/4	10	16 1/4	27 3/4	2 1/2
EA-268	268	150	810	36	74	68	20 15/16	6 11/16	16 3/8	16 7/8	3
EA-320	320	150	890	36	86	80	21 1/16	8 11/16	16 1/4	26 3/4	3
EA-388	388	150	900	36	99	93	21 3/16	9 1/16	22 1/4	33 3/4	3
EA-375	375	150	980	42	76 3/4	70 3/4	23 3/8	6	14	18	3
EA-450	450	150	1110	42	89 3/4	83 3/4	22 5/16	9 11/16	13 7/8	28	3
EA-535	535	150	1225	42	102	96	22 7/16	9 11/16	13 7/8	41 3/8	3



### SPECIFICATION

Furnish and install on the plans and described herein, an EA epoxy-lined storage tank as manufactured by Wessels Company. The tank shall have the dimensions of \_\_\_\_\_" diameter by \_\_\_\_\_" (high/length) with a storage capacity of \_\_\_\_\_ gallons. The interior shall be properly prepared sand blasted to white metal prior and shall be epoxy-lined with an NSF listed two-part epoxy coating. Epoxy coating will be continuous over the entire surface of the tank. The exterior shall be primed painted. The tank must be constructed in accordance with the latest revision of the ASME Boiler and Pressure Vessel Code and stamped \_\_\_\_\_ psi working pressure.

Each tank shall be Wessels model EA \_\_\_\_\_ or approved equal.