

SINCE 1908
wessels
company

SUBMITTAL

**TYPE: SEVERE SERVICE STAINLESS
STORAGE TANKS**

MODELS: SS12NA33 TO SS42NA96

SUBMITTAL SHEET No. SSNA-110

Date: 5/03

JOB

Wessels Representative _____

Unit Tag No. _____

Order No. _____ Date _____

Engineer _____

Submitted By _____ Date _____

Contractor _____

Approved By _____ Date _____

DESCRIPTION

Wessels type SSNA Severe Service Tanks are ASME 304 stainless steel storage vessels. They are designed for commercial and industrial systems that require internal and external protection more robust than traditional fabricated plain steel designs. They are designed to store water and can be used to absorb expansion forces and control pressures in any heating/cooling and hydro-pneumatic system.

CONSTRUCTION

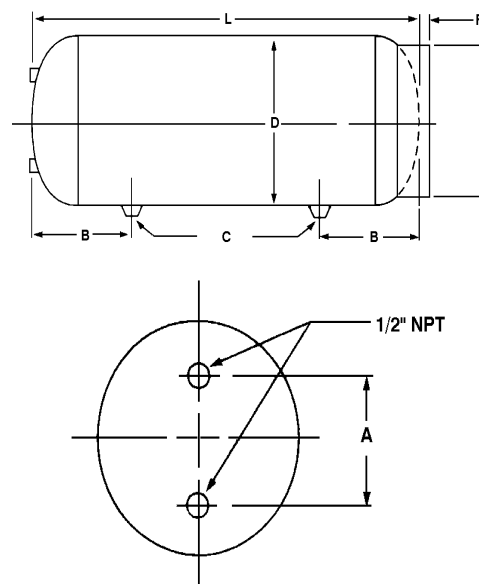
FABRICATED 304 STAINLESS STEEL
* 316L Stainless available

PERFORMANCE LIMITATIONS

Maximum Design Temperature: 450°F
Maximum Design Pressure: 125 PSI

DIMENSIONS AND WEIGHTS

Model	Gal.	A	B	C NPTF	D Dia	E	F	L Length	Ship Wt. (lbs.)
SS12NA33	15	8"	7"	1"	12"	11-1/2"	7/8"	33"	43
SS12NA51	24	8"	7"	1"	12"	11-1/2"	7/8"	51"	60
SS14NA48	30	10"	10"	1"	14"	11-1/2"	1-1/8"	48"	70
SS14NA63	40	10"	10"	1"	14"	11-1/2"	1-1/8"	63"	90
SS16NA72	60	12"	10"	1"	16"	11-1/2"	1-1/8"	72"	120
SS20NA62	80	16"	10"	1"	20"	18"	1-1/2"	62-1/2"	135
SS20NA78	100	16"	10"	1"	20"	18"	1-1/2"	78"	170
SS24NA65	120	20"	11-1/8"	1"	24"	18"	1-1/2"	65"	220
SS24NA72	135	20"	11-1/8"	1"	24"	18"	1-1/2"	72"	240
SS30NA62	175	22"	13-1/2"	1-1/2"	30"	24"	2"	62-1/2"	340
SS30NA77	220	22"	13-1/2"	1-1/2"	30"	24"	2"	77"	370
SS30NA84	240	22"	13-1/2"	1-1/2"	30"	24"	2"	84"	395
SS36NA72	295	22"	14-3/4"	1-1/2"	36"	30"	2-1/2"	72"	485
SS36NA93	400	28"	14-3/4"	1-1/2"	36"	30"	2-1/2"	92-1/2"	650



TYPICAL SPECIFICATION

Furnish and install as shown on plans a _____ gallon _____" diameter X _____" (long/high) 304-stainless steel expansion tank as manufactured by Wessels Company. The tank shall have NPT system connection, gage glass openings and drain. The tank shall be furnished with saddles if mounted horizontally and a base ring for vertical storage. The tank must be constructed in accordance with section VIII of the ASME Boiler and Pressure Vessels Code.

Each tank shall be Wessels model SS _____ or approved equal.