

SINCE 1908  
**wessels**  
company

SUBMITTAL

**TYPE: WESS-VENT – HIGH VELOCITY  
AIR & DIRT SEPARATOR**

**MODELS: WVA-2-HV TO WVA-16-HV**

**SUBMITTAL SHEET No. WVA-HV-117 Date: 6/09**

JOB \_\_\_\_\_

Wessels Representative \_\_\_\_\_

Unit Tag No. \_\_\_\_\_

Order No. \_\_\_\_\_ Date \_\_\_\_\_

Engineer \_\_\_\_\_

Submitted By \_\_\_\_\_ Date \_\_\_\_\_

Contractor \_\_\_\_\_

Approved By \_\_\_\_\_ Date \_\_\_\_\_

### DESCRIPTION

Wessels WVA-HV (High Velocity) series Air & Dirt Separators are designed to eliminate entrained air and separate debris associated with start-up and maintenance of any hydronic system. The design incorporates a skim valve, used to eliminate floating debris, and an air vent to automatically release air from the separator. The design and construction conforms to ASME Section VIII, Div.1

### CONSTRUCTION

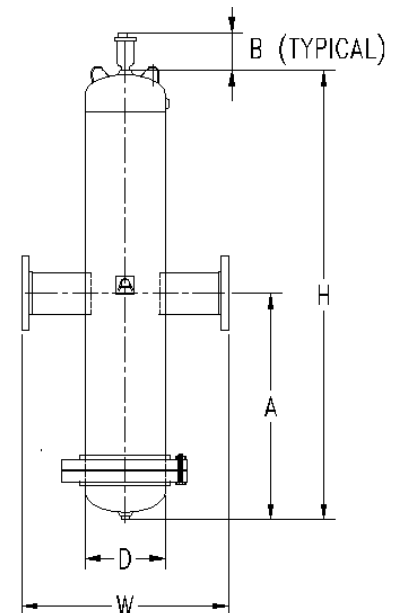
Shell: Carbon Steel  
Coalescing Medium: Stainless Steel  
Blow Down Valve (optional): Bronze  
Skim Valve (optional): Bronze  
Vent: (optional): Cast Iron

### PERFORMANCE LIMITATIONS

Maximum Design Temperature: 250°F  
Maximum Design Pressure: 125 PSIG

### DIMENSIONS AND WEIGHTS

MODEL	FLANGE SIZE	FLOW GPM	D (IN.)	H (IN.)	W (IN.)	A (IN.)	B (IN.)	WT LBS.
WVA-2-HV	2	105	4	33	15 1/4	16 1/2	8 5/8	76
WVA-2.5-HV	2 1/2	155	5	33	15 3/4	16 1/2	8 5/8	99
WVA-3-HV	3	225	6	42	20 1/4	21	8 5/8	139
WVA-4-HV	4	405	8	42	20 5/8	21	8 5/8	219
WVA-5-HV	5	630	10	59	27 3/4	29 1/2	8 5/8	236
WVA-6-HV	6	910	12	59	27 3/4	29 1/2	8 5/8	405
WVA-8-HV	8	1610	16	75	33 5/8	37 1/2	8 5/8	639
WVA-10-HV	10	2450	20	92	37 1/2	46	8 5/8	1045
WVA-12-HV	12	3500	24	110	42 1/2	55	8 5/8	1630
WVA-14-HV	14	4,800	30	110	48	55	8 5/8	2400
WVA-16-HV	16	6,250	32	110	48	55	8 5/8	3000



### SPECIFICATION

Furnish and install on the plans and described herein, a Wess-Vent WVA-HV High Velocity Air & Dirt Separator as manufactured by Wessels Company. Each separator must be designed with a blowdown valve, skim valve, and automatic air vent. The separator must also utilize in its design a stainless steel coalescing medium to aid in the separation of air and dirt in the system entrained water. The separator must be constructed in accordance with the latest revision of the ASME Boiler and Pressure Vessel Code and stamped 125 psi working pressure.

Each separator shall be Wessels model WVA- \_\_\_\_ -HV or approved equal.

101 TANK ST • GREENWOOD, IN 46143 • (317) 888-9800 • (317) 888-9988 FAX • [www.westank.com](http://www.westank.com)