

SINCE 1908
wessels
company

SUBMITTAL

TYPE: FTA ASME FLASH RECEIVER TANKS

MODELS: FTA 13 THRU FTA 180

Submittal Sheet No. B-3120

Date 2-98

JOB

Wessels Representative _____

Unit Tag No. _____

Engineer _____

Contractor _____

Order No. _____

Date _____

Submitted By _____

Date _____

Approved By _____

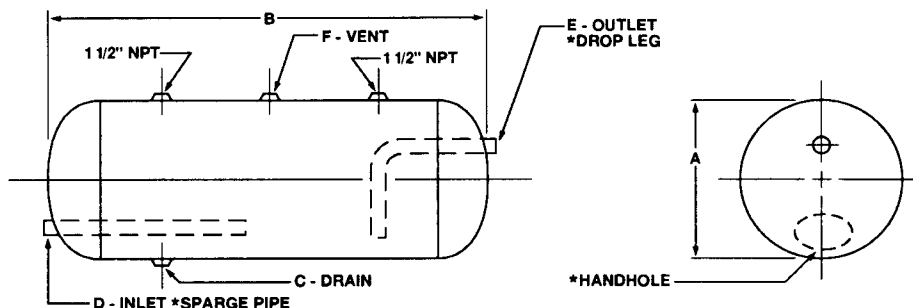
Date _____

DESCRIPTION

Wessels Type FTA flash tanks are designed for systems that require flashing of high pressure condensate into steam for low pressure heating supply mains, and to reduce and cool low pressure steam before it is returned to the boiler, condensate receiver, or discharged into sewer.

CONSTRUCTION

- ASME Constructed & Stamped
- 450°F Design Temperature
- Prime Painted Exterior



Model Number	GAL. CAP.	P.S.I. W.P.	DIA. A	OAL B	STANDARD CONNECTIONS				WEIGHT (lbs)	DISENGAGING AREA ft ²	OPTIONS		
					C	D	E	F			SPARGE PIPE	DROP LEGS	HAND HOLE
FTA 13	13	150	10	39	1"	1 1/2"	2"	79	2.71	1 1/2" x 18" with 20-3/8" holes.	1 1/2"	4" x 6"	
FTA 18	18	150	12	39				94	3.25				
FTA 24	24	150	14	39				108	3.79				
FTA 30	30	150	16	38	1 1/2"			2 1/2"	121				4.22
FTA 48	48	125	18	48	2"			3"	168				6.00
FTA 80	80	125	24	46		214			7.67	2" x 24" with 32-3/8" holes.	2"		
FTA 125	125	125	30	48		2 1/2"			285				10.00
FTA 180	180	125	36	48	3"	339			12.00				

***NOTE:** Sparge pipe, drop leg and handhole are available as optional equipment. Larger capacities, working pressures and fitting available.

TYPICAL SPECIFICATION Furnish and install as shown on plans a _____ gallon _____" diameter X _____" long plain steel flash tank designed for 450°F operating temperature. The tank shall have NPT inlet, outlet, vent and drain openings. The flash tank must be constructed in accordance with Section VIII of the ASME Boiler and Pressure Vessel Code and stamped. Optional: The tank shall have a dropleg, sparge pipe or handhole.

Each tank shall be a Wessels model FTA _____ or approved equal.