

SINCE 1908  
**wessels**  
 company

SUBMITTAL

**BDT-SERIES**  
 BOILER BLOWDOWN TANKS

Models: BDT-21 thru BDT-606  
 Submittal Sheet No. K-1003B

Date: 4/16

Job Name _____	Submitted By _____	Date _____
Location _____	Approved By _____	Date _____
_____	Order No. _____	Date _____
Engineer _____	Notes _____	
Contractor _____	_____	
Sales Rep. _____	_____	

**Description**

Wessels type BDT boiler blowdown tanks are designed to reduce the temperature and pressure of blowdown discharge from the boiler. This equipment is essential because it avoids discharging the boiler blowdown directly to a sanitary sewer.

**Construction**

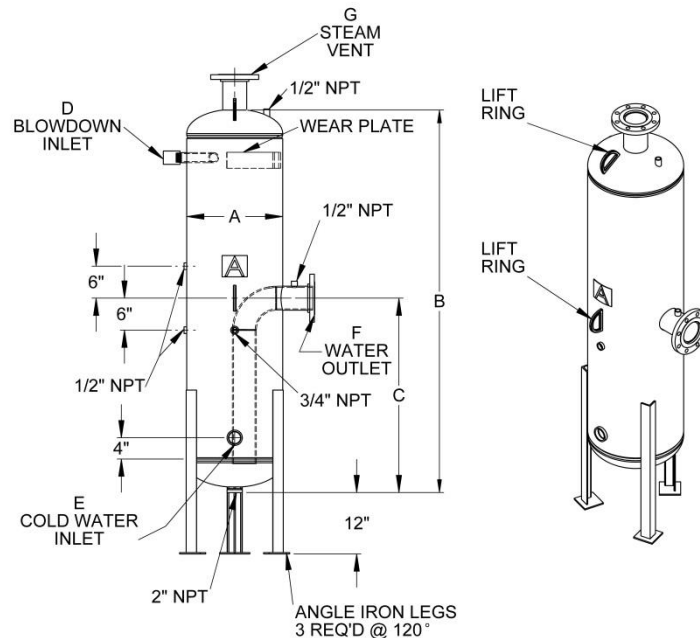
Carbon Steel - 3/8" minimum thickness  
 Exterior: Primer Painted

**Performance Limitations**

Maximum Design Temperature: 450°F  
 Maximum Design Pressure: 125 psi

\*200 & 250 PSIG available

Model Number	Part Number	Tagging Information	Quantity
BDT-			



**Typical Specification**

Furnish and install, as shown on plans, a \_\_\_\_\_" diameter X \_\_\_\_\_" high blowdown tank. The tank shall be fitted with a tangential blowdown inlet with wear plate, water over flow outlet, and atmospheric steam vent. NPT Connections are to be provided for the installation of a pressure gauge, thermometer, level gauge, clean out drain, and cold water inlet. The tank must be constructed in accordance with the most recent addendum of Section VIII Division 1 of the ASME Boiler and Pressure Vessel Code.

Each tank shall be Wessels model number BDT-\_\_\_\_\_ or approved equal.

**Dimensions & Weights**

Model Number	Part Number	Boiler Design Pressure	Dimensions in Inches							
			Diameter "A"	Height "B"	Outlet Height "C"	Blowdown "D"	Cold Water Inlet "E"	Water Outlet "F"	Steam Vent "G"	
BDT-21	52010021	1 to 50	14	66	33	3/4	3/4	1 1/2	2	
BDT-22	52010022					1	1			
BDT-23	52010023					1 1/4	1 1/4	2 1/2		
BDT-24	52010024		1 1/2	1 1/2						
BDT-25	52010025		18	72	36	2	2	4		3
BDT-26	52010026		20			2 1/2				4
BDT-51	52010051	51 to 100	14	66	33	3/4	1	1 1/2	2	
BDT-52	52010052					1	1 1/4	2	2 1/2	
BDT-53	52010053		18	72	36	1 1/4	1 1/2	3	3	
BDT-54	52010054					1 1/2	2	4	4	
BDT-55	52010055		24	78	39	2	2 1/2		5	5
BDT-56	52010056		30			2 1/2		6		
BDT-101	52010101	101 to 150	14	66	33	3/4	1	2	2 1/2	
BDT-102	52010102					1	1 1/4	3	3	
BDT-103	52010103		20	72	36	1 1/4	1 1/2		4	
BDT-104	52010104		24			1 1/2	2	4	5	
BDT-151	52010151	151 to 200	14	66	33	0.75	1	2	3	
BDT-152	52010152		18	72	36	1	1 1/4	2 1/2	4	
BDT-153	52010153		24			1 1/4	2	3	5	
BDT-154	52010156		30	78	39	1 1/2		3	4	6
BDT-156	52010156		48			2 1/2	5		8	
BDT-201	52010201		201 to 300	18	72	34	3/4	1 1/4	2	4
BDT-202	52010202	24		1			1 1/2	2 1/2	5	
BDT-203	52010203	30		78	39	1 1/4	2	4	6	
BDT-204	52010204	36				1 1/2	2 1/2			
BDT-205	52010205	48		84	42	2	3	5	8	
BDT-206	52010206	54				2 1/2		6	10	
BDT-301	52010301	301 to 400	20	72	36	3/4	1 1/4	2 1/2	4	
BDT-302	52010302		24			1	1 1/2	3	5	
BDT-304	52010304		42	78	39	1 1/2	2 1/2	4	8	
BDT-305	52010305		54	84	42	2	3	5	10	
BDT-306	52010306		66			2 1/2	4	6		
BDT-401	52010401		401 to 500	20	72	36	1 1/4	1 1/4	2 1/2	4
BDT-404	52010404	48		78	39	1 1/2	2 1/2	4	8	
BDT-405	52010405	60		84	42	2	3	5	10	
BDT-406	52010406	72				2 1/2	4	8	12	
BDT-501	52010501	501 to 600	24	72	36	3/4	1 1/4	2 1/2	5	
BDT-502	52010502		30	78	39	1	1 1/2	3	6	
BDT-503	52010503		42			1 1/4	2 1/2	4	8	
BDT-504	52010504		54	84	42	1 1/2		3	5	10
BDT-505	52010505		66			2	6		12	
BDT-506	52010506		72	2 1/2	4	8				
BDT-602	52010602	601 to 800	36	78	39	1	1 1/2	3	6	
BDT-603	52010603		48			1 1/4	2	4	8	
BDT-604	52010604		60	84	42	1 1/2	2 1/2	5	10	
BDT-605	52010605		72			2	3	6	12	
BDT-606	52010606			2 1/2	4	8				

Note: The inlet "D" should be the same as blowoff valve.