

SINCE 1908
wessels
 company

SUBMITTAL
SPA-SERIES
 AIR SEPARATOR

Models: SPA-2 to SPA-24

Submittal Sheet No. D-1003A Rev. 1 9/12/2018

| | | |
|------------------|--------------------|------------|
| Job Name _____ | Submitted By _____ | Date _____ |
| Location _____ | Approved By _____ | Date _____ |
| _____ | Order No. _____ | Date _____ |
| Engineer _____ | Notes _____ | _____ |
| Contractor _____ | _____ | _____ |
| Sales Rep. _____ | _____ | _____ |

Description:

Wessels SPA ASME Vortex type Air Separators eliminate air quickly and efficiently from open and closed loop heating/cooling systems. Water enters and exits through unique "tangential" connections, which promote a low velocity swirling effect in the center of the unit. Natural centrifugal forces allow the heavier air-free water to move toward the outer edges while entrained air is captured within the "eye" of the vortex and released out of the top of the separator. The bubble-free water then exits near the bottom of the unit, protecting the systems against the noise, corrosion, and damage commonly caused by entrained air.

Construction:

Shell: Carbon Steel
 Heads: Carbon Steel
 Exterior: Red Oxide Primer
 Interior: Unlined

Design Parameters:

Maximum Design Pressure: 125 PSIG*
 Temperature Range: -20°F to 450°F

*Higher pressures also available

| MODEL NUMBER | PART NUMBER | MAX FLOW (GPM) | TAGGING INFORMATION | QUANTITY |
|--------------|-------------|----------------|---------------------|----------|
| SPA-2 | 72006019 | 56 | | |
| SPA-2.5 | 72006025 | 90 | | |
| SPA-3 | 72006030 | 190 | | |
| SPA-4 | 72006035 | 300 | | |
| SPA-5 | 72006036 | 530 | | |
| SPA-6 | 72006060 | 850 | | |
| SPA-8 | 72006080 | 1900 | | |
| SPA-10 | 72030010 | 3200 | | |
| SPA-12 | 72030012 | 4800 | | |
| SPA-14 | 72072014 | 6100 | | |
| SPA-16 | 72072016 | 8000 | | |
| SPA-18 | 72072018 | 9700 | | |
| SPA-20 | 72072020 | 12000 | | |
| SPA-22 | 72072022 | 15000 | | |
| SPA-24 | 72072024 | 17000 | | |

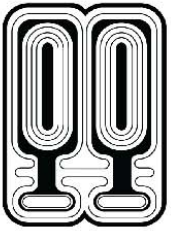
Typical Specification:

Furnish and install, as shown on plans, a vortex type AIR SEPARATOR model SPA-_____ sized for _____ GPM, with _____" (NPT/Flanged) tangential connections, as manufactured by Wessels Company. A blowdown connection shall be provided to facilitate routine cleaning of the unit. The tank must be constructed in accordance with most recent edition of Section VIII Division 1 of the ASME Boiler and Pressure Vessel Code, and shall be constructed and stamped for 125 PSIG working pressure @ -20°F to 450°F. Each air separator shall be Wessels model number SPA-_____ or approved equal.



SINCE 1908
wessels
 company

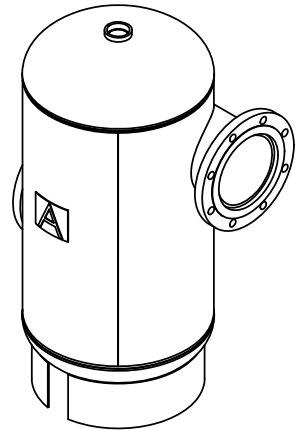
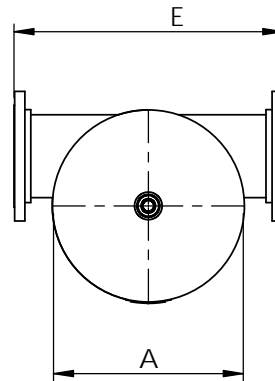
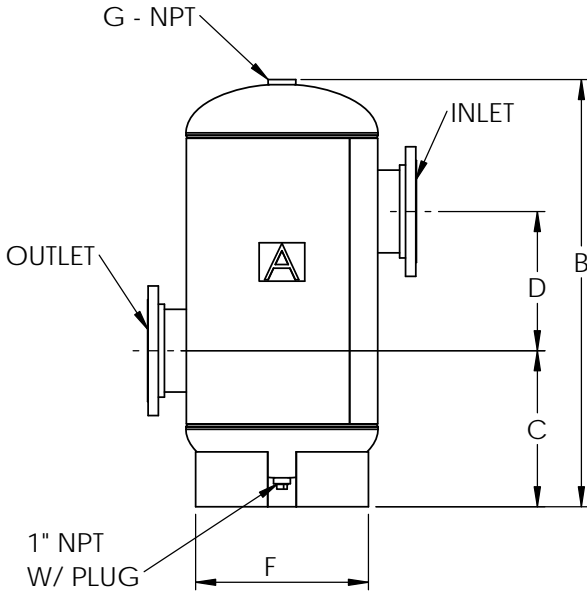
101 Tank Street Greenwood, IN 46143
 P: 317-888-9800 F: 317-865-7411
 www.westank.com



SINCE 1908
wessels
 company

SUBMITTAL
SPA-SERIES
 AIR SEPARATOR

Models: SPA-2 to SPA-24
 Submittal Sheet No. D-1003A Rev. 1 9/12/2018



SPA-2 thru SPA-24

Dimensions & Weights:

| Model Number | Connection Size | Dimensions in Inches | | | | | | | Approx. Shipping Weight (lbs) | | | | | | |
|--------------|-----------------|----------------------|--------|--------|--------|--------|-------|-------|-------------------------------|-----|--------|-----|----|----|------|
| | | A | B | C | D | E | F | G | | | | | | | |
| SPA-2 | 2 NPT | 12 | 22 1/2 | 9 5/16 | 8 1/2 | 16 5/8 | 9 1/2 | 1 1/4 | 34 | | | | | | |
| SPA-2.5 | 2.5 NPT | | | 9 3/4 | 8 | 19 3/4 | | | 37 | | | | | | |
| SPA-3 | 3 | | | 12 1/8 | 10 3/4 | 21 3/4 | | | 45 | | | | | | |
| SPA-4 | 4 | 14 | 32 | 16 1/4 | 14 1/2 | 28 | 18 | 1 1/2 | 80 | | | | | | |
| SPA-5 | 5 | | | | | | | | 21 1/2 | 20 | 41 | 125 | | | |
| SPA-6 | 6 | 20 | 44 | 24 1/2 | 31 1/2 | 46 3/8 | 30 | 2 | 175 | | | | | | |
| SPA-8 | 8 | | | | | | | | 40 | 60 | 38 | 210 | | | |
| SPA-10 | 10 | | | | | | | | 48 | 108 | 38 | 40 | 60 | 38 | 460 |
| SPA-12 | 12 | 30 | 60 1/2 | 21 1/2 | 20 | 41 | 24 | 1 1/2 | 577 | | | | | | |
| SPA-14 | 14 | | | | | | | | 54 | 124 | 41 | 50 | 66 | 44 | 850 |
| SPA-16 | 16 | | | | | | | | 60 | 138 | 42 1/2 | 60 | 72 | 50 | 1858 |
| SPA-18 | 18 | 66 | 150 | 46 | 66 | 78 | 56 | 2 | 2490 | | | | | | |
| SPA-20 | 20 | | | | | | | | 80 | 80 | 3346 | | | | |
| SPA-22 | 22 | | | | | | | | 80 | 80 | 3879 | | | | |
| SPA-24 | 24 | | | | | | | | 4211 | | | | | | |

Notes:

- Mounting Clips Available Upon Request



SINCE 1908
wessels
 company

101 Tank Street Greenwood, IN 46143
 P: 317-888-9800 F: 317-865-7411
 www.westank.com