

SINCE 1908
wessels
 company

SUBMITTAL

SPA-S SERIES
 AIR SEPARATOR WITH STRAINER

Models: SPA-2S to SPA-24S
 Submittal Sheet No. D-1004A Rev. 1 9/12/2018

Job Name _____	Submitted By _____	Date _____
Location _____	Approved By _____	Date _____
_____	Order No. _____	Date _____
Engineer _____	Notes _____	_____
Contractor _____	_____	_____
Sales Rep. _____	_____	_____

Description:

Wessels SPA-S ASME Vortex type Air Separators with removable strainer eliminate air quickly and efficiently from open and closed loop heating/cooling systems. Water enters and exits through unique "tangential" connections, which promote a low velocity swirling effect in the center of the unit. Natural centrifugal forces allow the heavier air-free water to move toward the outer edges while entrained air is captured within the "eye" of the vortex and released out of the top of the separator. The bubble-free water then exits near the bottom of the unit, protecting systems against the noise, corrosion, and damage commonly caused by entrained air.

Construction:

Shell: Carbon Steel
 Heads: Carbon Steel
 Exterior: Red Oxide Primer
 Interior: Unlined

Design Parameters:

Maximum Design Pressure: 125 PSIG*
 Temperature Range: -20°F to 450°F

*Higher pressures also available

MODEL NUMBER	PART NUMBER	MAX FLOW (GPM)	TAGGING INFORMATION	QUANTITY
SPA-2-S	72072102	56		
SPA-2.5-S	72072125	90		
SPA-3-S	72072103	190		
SPA-4-S	72072104	300		
SPA-5-S	72072105	530		
SPA-6-S	72072106	850		
SPA-8-S	72072108	1900		
SPA-10-S	72072110	3200		
SPA-12-S	72072112	4800		
SPA-14-S	72072114	6100		
SPA-16-S	72072116	8000		
SPA-18-S	72072118	9700		
SPA-20-S	72072120	12000		
SPA-22-S	72072122	15000		
SPA-24-S	72072124	17000		

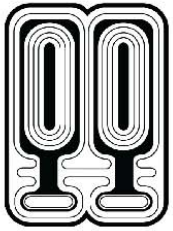
Typical Specification:

Furnish and install, as shown on plans, a vortex type AIR SEPARATOR WITH STRAINER model SPA-_____-S sized for _____GPM, with _____" (NPT/Flanged) tangential connections, as manufactured by Wessels Company. A blowdown connection shall be provided to facilitate routine cleaning of the unit. The tank must be constructed in accordance with most recent edition of Section VIII Division 1 of the ASME Boiler and Pressure Vessel Code, and shall be constructed and stamped for 125 PSIG working pressure @ -20°F to 450°F. Each air separator shall be Wessels model number SPA-_____-S or approved equal.



SINCE 1908
wessels
 company

101 Tank Street Greenwood, IN 46143
 P: 317-888-9800 F: 317-865-7411
 www.westank.com

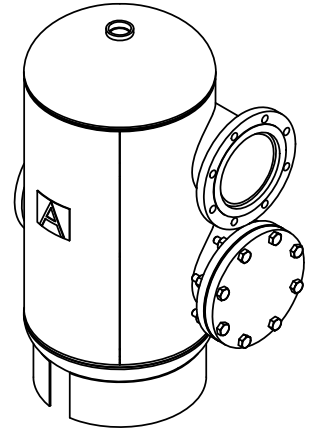
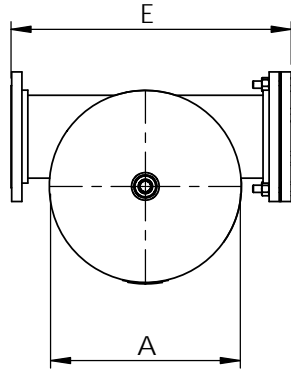
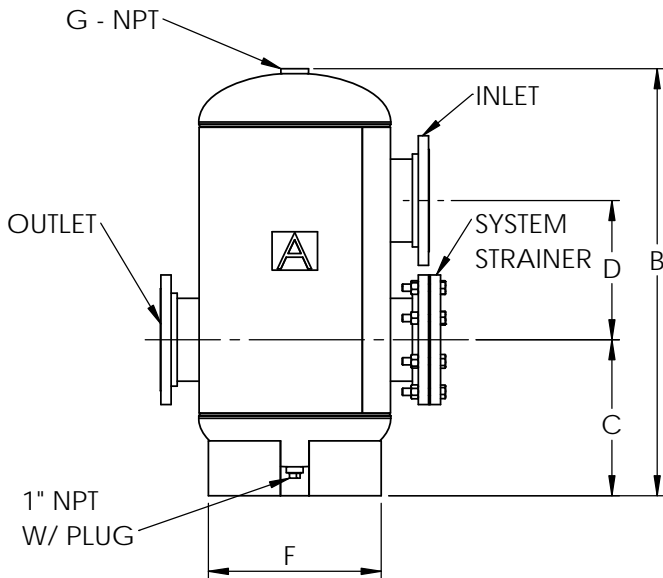


SINCE 1908
wessels
 company

SUBMITTAL

SPA-S SERIES
 AIR SEPARATOR WITH STRAINER

Models: SPA-2S to SPA-24S
 Submittal Sheet No. D-1004A Rev. 1 9/12/2018



SPA-2S thru SPA-24S

Dimensions & Weights:

Model Number	Connection Size	Dimensions in Inches							Approx. Shipping Weight (lbs)
		A	B	C	D	E	F	G	
SPA-2-S	2 NPT	12	22 1/2	9 5/16	8 1/2	16 5/8	9 1/2	1 1/4	34
SPA-2.5-S	2.5 NPT			9 3/4	8	19 3/4			37
SPA-3-S	3			12 1/8	10 3/4	21 3/4			45
SPA-4-S	4	14	32	16 1/4	14 1/2	28	18	1 1/2	80
SPA-5-S	5								125
SPA-6-S	6	20	44	21 1/2	20	41	24	2	175
SPA-8-S	8								210
SPA-10-S	10								460
SPA-12-S	12	30	60 1/2	24 1/2	31 1/2	46 3/8	30	2	577
SPA-14-S	14								850
SPA-16-S	16								1858
SPA-18-S	18	54	124	41	50	66	44	2	2490
SPA-20-S	20								3346
SPA-22-S	22								3879
SPA-24-S	24	66	150	46	66	78	56	2	4211
						80			

Notes:

- Mounting Clips Available Upon Request



SINCE 1908
wessels
 company

101 Tank Street Greenwood, IN 46143
 P: 317-888-9800 F: 317-865-7411
 www.westank.com