



SINCE 1908
wessels
 company

SUBMITTAL

WMA-SERIES

WESMAG MAGNETIC FILTRATION

Models: WMA-1-1 thru WMA-3-9

Submittal Sheet No. A-1555M

Date: 1/18

Job Name _____	Submitted By _____	Date _____
Location _____	Approved By _____	Date _____
_____	Order No. _____	Date _____
Engineer _____	Notes _____	_____
Contractor _____	_____	_____
Sales Rep. _____	_____	_____

Description

Wessels type WMA Magnetic Filtration filter bag magnets, are designed for attracting ferrous particles from liquid flow, increasing filter bag life. The high strength Neodymium rare earth magnets are housed in a stainless sleeve, and are fully removable to aid in removing the collection of iron residue.

Construction

Fittings: 304 stainless Steel
 Tube sheath: 304 stainless steel

Performance Limitations

Maximum Design Temperature: 450°F
 Maximum Design Pressure: 300 PSIG*

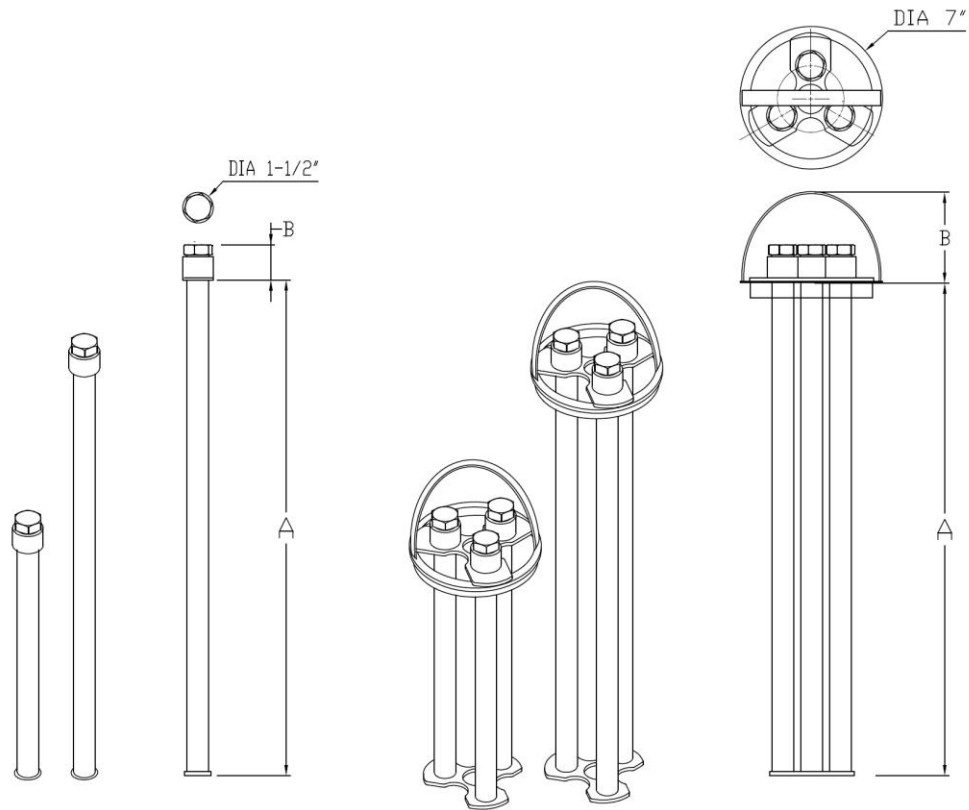
*Other pressure ratings available

Model Number	Part Number	Fits Bag Style #	Number of Elements	Flow Capacity (GPM)	Dirt Hold Capacity (lbs)	Tagging Information	Quantity
WMA-1-1	19990011	1	1	93	8.8		
WMA-2-1	19990021	2	1	137	13.2		
WMA-1-3	19990013	1	3	275	26.5		
WMA-2-3	19990023	2	3	413	39.7		

Typical Specification

Furnish and install, as shown on plans, a WMA_____ for bag style# _____ with _____ magnetic elements fully enclosed in a water tight 304 stainless sleeve. Each element houses 13,000 Gauss Neodymium magnets capable of separating and holding up to 2 ½ lbs. of ferrous chips per inch of magnet. The magnets shall be easily removed from the sleeve to allow better filing removal from the element surface.

Each tank shall be Wessels model number WMA-_____ or approved equal.



WMA-1-1 & WMA-2-1

WMA-1-3 & WMA-2-3

Dimensions & Weights

Model Number	Dimensions in Inches			Approx. Ship Wt. (lbs)
	A	B	Dia.	
WMA-1-1	17	1 5/8	1 5/8	3.8
WMA-2-1	27	1 5/8	1 5/8	5.5
WMA-1-3	17	6 3/4	7	12
WMA-2-3	27	6 3/4	7	17

Notes

- Element wetted surface is 304 stainless steel