

# Multi-Purpose Hydronic Accessory Tanks

## WMT Series

Wessels WMT series ASME  
Chilled and Hot Water Multi-  
Purpose Carbon Steel Hydronic  
Accessory Tanks with WesPro  
Super Baffle Filtration

Optional:  
WesMag at Inlets  
Stainless Steel Construction  
Trim Package

### APPLICATIONS

Buffer System Volume

Chilled or Hot Water

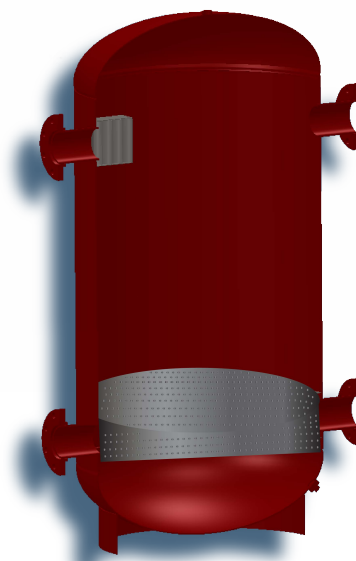
Primary/Secondary

Air & Dirt Separation

Magnetic Filtration

Reduce Short-Cycling

Extend System Life



Wessels ASME Multi-Purpose Tanks (WMT) are designed for multiple functions. The four multi-configurable connections allow for primary/secondary hydraulic separation with buffer energy storage for either hot or chilled water systems. The buffer volume slows fluid velocity resulting in superior air elimination. Adding WesPro Super Filter Baffle coalescing media increases air & dirt elimination efficiencies. For ferrous impurities, the WesMag system can be installed for additional particulate removal.

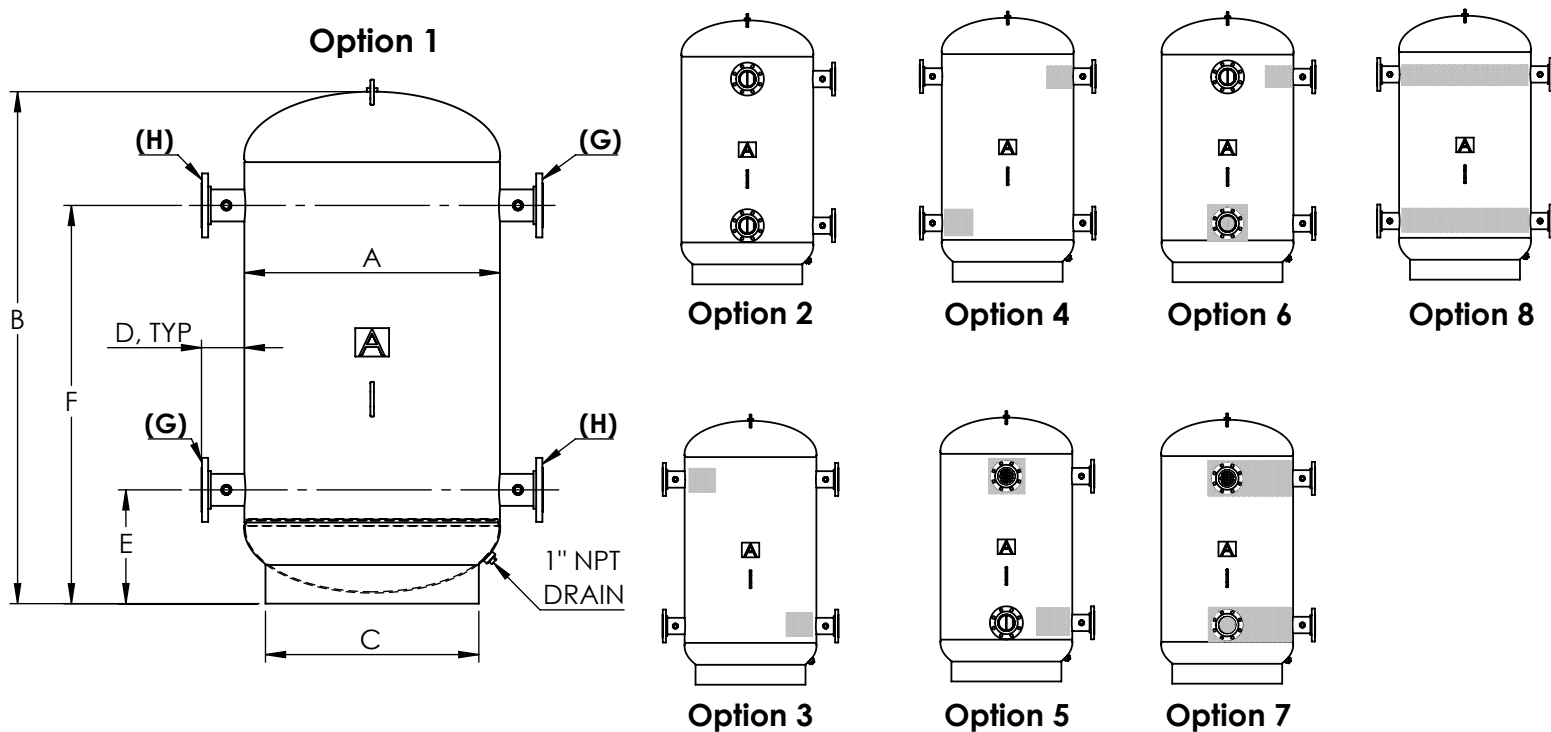
### CUSTOMIZE YOUR CONFIGURATION

- 90° and 180° inlet/outlet corner or in-line models
- Connection-to-connection or partial internal coalescing media arrangement included
- WesMag® rare earth magnetic filtration (optional)
- Air vent and blow-down valve trim package (optional)



SINCE 1908  
**wessels**  
company

# WMT - Multi-Purpose Hydronic Accessory Tanks



## Dimensions & Weights:

Model Number	Dimensions in Inches								Approx. Shipping Weight (lbs)		
	A	B	C	D	E	F	(G)	(H)			
WMT-50	16	60	12	See Note 4	10 13/16	50 11/16	2, 3, 4	2, 3, 4	150		
WMT-60	20	48	16		10 7/8	38 5/8			225		
WMT-75		60				50 5/8				275	
WMT-100	24		20		13	48 1/2			350		
WMT-150	30	85 1/2	24		15	46 1/2	3, 4, 6	3, 4, 6		500	
WMT-250					16 1/2	70 1/2			615		
WMT-350	36	92	30		19	74 1/2					4, 6, 8
WMT-400		98				80 1/2	1900				
WMT-500	42	90	36		20 1/2	71		2100			
WMT-700	48	100	42		21 3/8	80 1/8					
WMT-850	54	98	48		24	75					
WMT-1040	60	96	54		26 3/4	70 3/4	6, 8, 10	6, 8, 10			

## Model Example WMT-50-22-1

(a) (G)(H)(b)

(a) Gallon Size

**Connection Size:**

**(G)** Primary Zone

**(H)** Secondary Zone

(b) Configuration

## TYPICAL SPECIFICATION

Furnish and install, as shown on plans, a WMT- \_\_\_\_\_ as manufactured by Wessels Company. The tank shall incorporate media (inlets/inlets & outlets/none). The system primary-zone water connections must be \_\_\_\_\_" (NPT/flanged/grooved) and the system secondary-zone water connections must be \_\_\_\_\_" (NPT/flanged/grooved) and positioned (90°/180°) apart. The WMT must be constructed in accordance with the most recent addendum of Section VIII Division 1 of the ASME Boiler and Pressure Vessel Code and constructed and stamped for \_\_\_\_\_ PSI working pressure @ 450°F.

Each tank shall be Wessels model number WMT- \_\_\_\_\_ or approved equal.

- Inspection openings will be provided as required by ASME code.
- Insulation, Trim Package, and WesMag are optional.
- Dimensions shown are subject to change and should not be used for pre-piping. Weights are based on max flange connection. Contact your local Wessels representative is certified dimensional drawings are required.
- For connections 3F and below, The "D" dimension is 4". For connections 4F and above, The "D" dimension is 6".



SINCE 1908  
**wessels**  
company

101 Tank Street Greenwood, IN 46143  
P: 317-888-9800 F: 317-865-7411  
www.westank.com